

**ACCESSORIES and REPLACEMENT PARTS LIST**  
**FOR 25-PAF, 55-SHP25 and 55-TRP25**

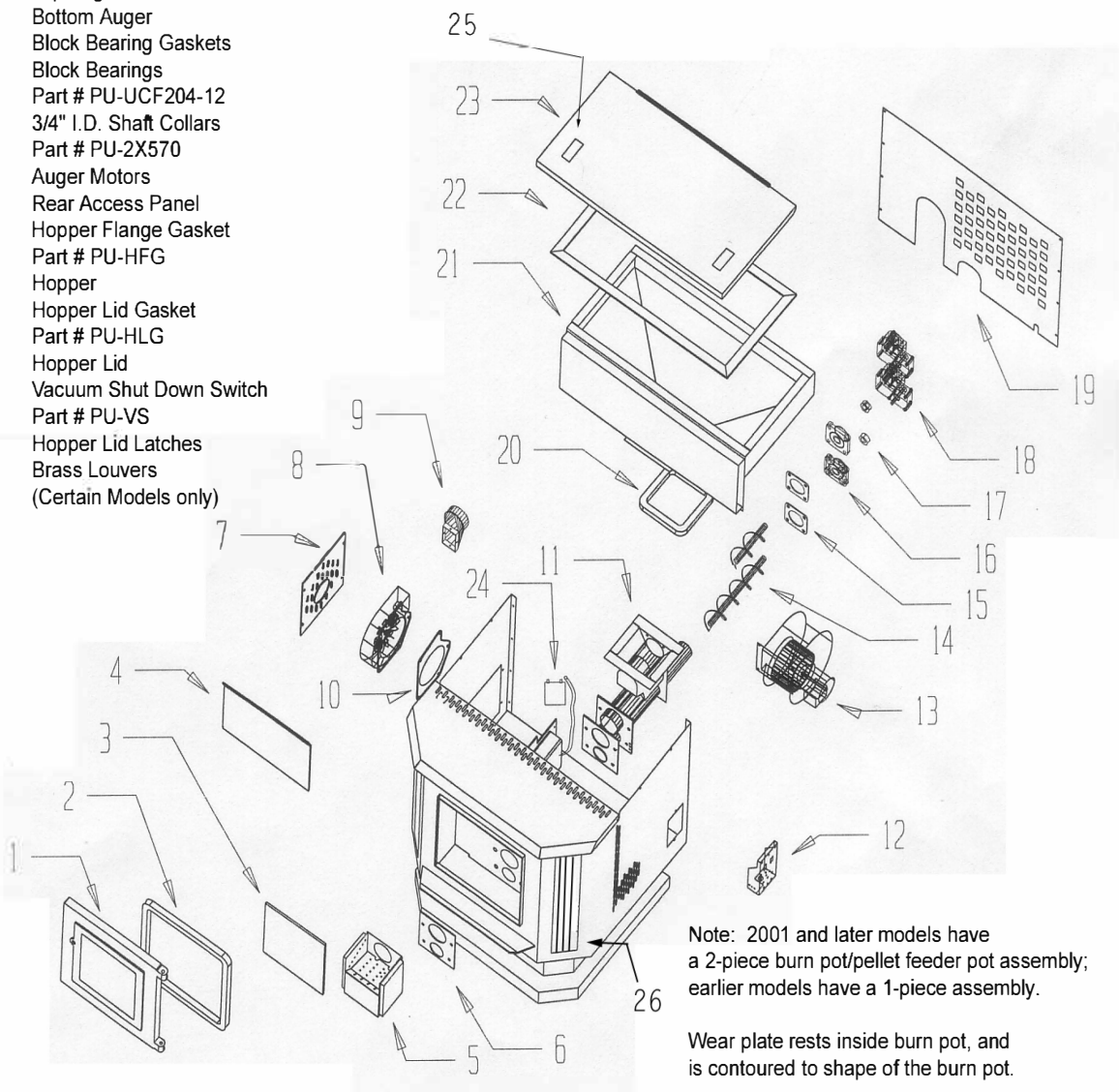
**OPTIONS:**

AC-3000	3" PELLET VENT KIT
AC-3001	REMOTE THERMOSTAT
AC-106-P/SH-106-P	BRASS WINDOW TRIM
AC-103	BRASS LIP TRIM FOR ASH APRON
GU-1E30-914	WALL THERMOSTAT

**REPLACEMENT PARTS:**

AC-GGK	GLASS GASKET KIT
AC-DGKC	DOOR GASKET KIT
AC-G9	9" X 9" CERAMIC GLASS (W/GASKET)
AC-SH	DOOR SPRING HANDLE
AC-MCSP	HI-TEMPERATURE CHARCOAL PAINT
PU-047040	1 R.P.M. AUGER MOTOR
PU-076002	COMBUSTION (EXHAUST) BLOWER
BM-1376	850 CFM CONVECTION BLOWER
PU-CB98	DIGITAL CONTROL BOARD
PU-62-40-151-2	Hopper Lid Latch (2002 and later Models; for earlier models order PU-103-50)
PU-AF6T	TOP AUGER SHAFT W/FLIGHTING
PU-AF11B	BOTTOM AUGER SHAFT W/FLIGHTING
PU-BP98	BURN POT ASSEMBLY
PU-UCF204-12	AUGER BEARING
PU-2X570	¾" I.D. LOCKING COLLAR

NUMBER	PART DESCRIPTION
1	Door (Part # CA-19A )
2	Door Gasket (Part # AC-DGKC )
3	Glass with Gasket (Part # AC-G9)
4	Impingement Plate
5	Burn Pot and Wear Plate
6	Burn Pot Gasket
7	Side Access Panel
8	Combustion Blower
9	3" Blower Adapter
10	Gasket for Combustion Blower Part # PU-CBG
11	Pellet Feeder Pot
12	Digital Control Board
13	Convection Blower
14	Top Auger
15	Block Bearing Gaskets
16	Block Bearings Part # PU-UCF204-12
17	3/4" I.D. Shaft Collars Part # PU-2X570
18	Auger Motors
19	Rear Access Panel
20	Hopper Flange Gasket Part # PU-HFG
21	Hopper
22	Hopper Lid Gasket Part # PU-HLG
23	Hopper Lid
24	Vacuum Shut Down Switch Part # PU-VS
25	Hopper Lid Latches
26	Brass Louvers (Certain Models only)



Note: 2001 and later models have a 2-piece burn pot/pellet feeder pot assembly; earlier models have a 1-piece assembly.

Wear plate rests inside burn pot, and is contoured to shape of the burn pot.